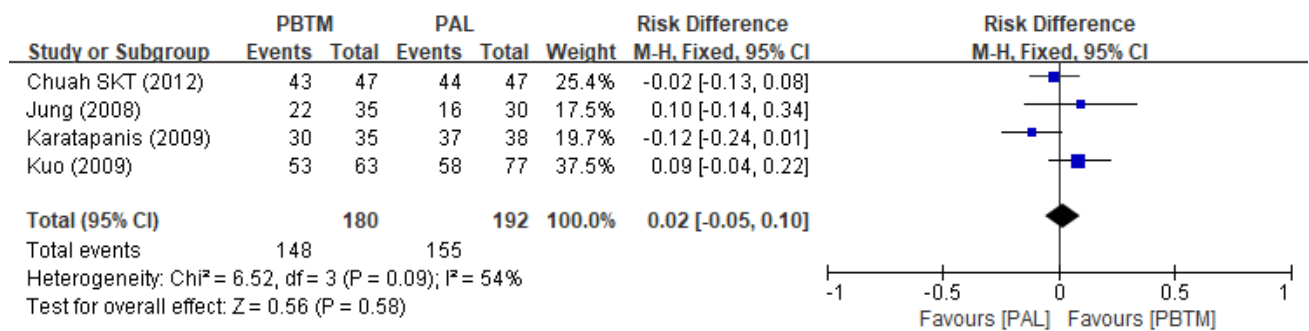


(A)



(B)

**Supplementary Fig. 8.** Meta-analysis of four studies which compared bismuth quadruple therapy and levofloxacin triple therapy after failure of first-line standard triple therapy. (A) Intention-to-treat analysis. (B) Per protocol analysis. PBTM, bismuth quadruple therapy; PAL, proton pump inhibitor, amoxicillin, levofloxacin; M-H, Mantel-Haenszel test.